

## Emergency Broadcast Stations

### Kent County

WDSB - 92.9 FM WRDX - 94.7 FM  
WDOV - 1410 AM

### New Castle County

WMPH - 91.7 FM WILM - 1450 AM  
WAFT - 89.1 FM WAFL - 97.7 FM  
WTMC - 1380 AM

### Sussex County

WZBH - 93.5 FM WSTW - 93.7 FM  
WJWL - 900 AM WRBG - 107.9 FM

### Television Emergency Broadcast Systems

WMDT-TV 47 WBOC-TV 16

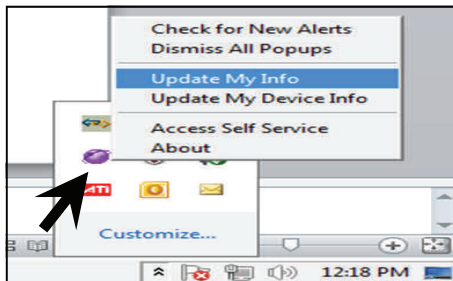
### Statewide traffic alerts

1380 AM



### AtHoc (On-base)

The AtHoc system is similar to a reverse-911 feature for the base that enables personnel to receive emergency notifications sent out by the Command Post. Notifications are sent by a computer instantly by email, telephone, and text message when enabled.



To ensure that the system has your most up-to-date contact information, right-click the purple AtHoc icon in the corner of your workstation screen and click "update my info."

## DAFB Evacuation Policy for Natural Disasters

Many members arrive and have questions regarding hurricane evacuation procedures. Every disaster is different and will have tailored guidance, but the basic information is as follows:

**DoD/Military/Dependents:** The decision to evacuate from any Local official (DEMA) will not be sufficient for DAFB personnel. This decision for DAFB lies with the Wing Commander. He must give an evacuation order. A local official *cannot* obligate the DoD funds needed for an evacuation.

**The Wing Commander** may specify a limited evacuation location area. Any Safehaven location distance (i.e. 750 miles radius) from the evacuation location, or any conus Safehaven location as appropriate (JFTR, PARS. US 6051 & U 6052).

**If TDY** outside of the evacuation area, the Wing Commander may extend TDY orders until safe to return to home station.

**If on leave status:** The Wing Commander may extend leave or convert to TDY status and report to nearest military installation.

**Regular Salary continues** throughout the evacuation in accordance with 5 U.S.C. 5523. You also receive travel, mileage and per diem for yourself and dependents.

**Prior approval to evacuate must be given** in order to be given any *financial reimbursement* to and from Safehaven.

**If we have to evacuate for severe weather incidents,** more detailed instructions will be provided.



## Installation Office of Emergency Management

### Base Emergency Preparedness Orientation Supplement



### Welcome to Dover Air Force Base!

*Please review the information contained with your family members and keep this pamphlet with your important papers in case of an emergency.*

For questions, please contact:

436 CES/CEX  
639 Evereaux St, Bay 19  
Dover AFB, DE 19902

Phone: 302-677-6218  
E-mail: 436CES.CEX@us.af.mil

## Kent County Evacuation Routes

Primary and secondary evacuation routes for Kent County are listed in the following tables. These evacuation routes are all unlimited access roadways with numerous entrances and exits. Therefore, it will not be possible to limit access to the designated primary evacuation routes during an emergency, and it is anticipated traffic flow will continue normally along these routes. It is expected evacuees will utilize the outbound lane(s) with emergency vehicles being directed to the inbound lanes(s).

*For more information, please see evacuation policy highlights on reverse.*

### Primary Evacuation Routes East/West

ROUTE	FROM	TO
Woodland Beach Rd	Delaware Bay	Route 9
Port Mahon Rd	Delaware Bay	Route 9
Pickering Beach Rd	Delaware Bay	Route 9
Kitts Hummock Rd	Delaware Bay	Route 9
Bowers Beach Rd	Delaware Bay	Route 1
Milford Neck Rd	Delaware Bay	Route 1
Thompsonville Rd	Delaware Bay	Route 1
Big Stone Beach Rd	Delaware Bay	Route 1

## Primary Evacuation Routes

### North/South

ROUTE	FROM	TO
1	Kent/Sussex Boundary	Kent/New Castle Boundary
13	Kent/Sussex Boundary	Kent/New Castle Boundary
113	Kent/Sussex Boundary	US 13

Should local authorities determine that primary routes are not the safest option, below are secondary evacuation routes for Kent County.

### Secondary Evacuation Routes

#### North/South

ROUTE	FROM	TO
9	SR1	Kent/New Castle Boundary

#### East/West

ROUTE	FROM	TO
300	US 13	DE/MD Border
42	Route 9	Route 1
8	Route 9	DE/MD Border
15	Route 14	US 13
12	Route 1	US 13
14	Route 1	DE/MD Border

## Emergency Notification Methods

*The following are methods of receiving emergency notifications, both on and off-base.*

### Local Authorities

#### Delaware Emergency Notification System (DENS)

**FirstCall** Network's Registration Line is a toll-free number for citizens that wish to be notified by local authorities via their cellular phones in a disaster/emergency event.

- Registration Line is **(866) 484-3264**. Only one phone number per address.
- This process is very user friendly. Callers will be prompted while using the system.
- The system will ask for: Caller's Name, Phone Number, Street Address, City, State, Zip Code
- Once the information has been entered, the caller will receive a confirmation call back from the system.
- The information is protected, under the normal non-disclosure agreement between **FirstCall** and the State of Delaware.

### Emergency Preparedness Voluntary Registry

Citizens who have special needs or notification requirements, or who would require assistance with a natural disaster evacuation are encouraged to register with local authorities. For more information or to register, please visit:

[www.de911assist.delaware.gov](http://www.de911assist.delaware.gov)

